



Maximo for Offshore Wind

Helping offshore wind owners and operators, and OFTOs achieve operational excellence

Advancing Asset Management in the Offshore Wind Industry

Benefit from Experience

- Take charge of your asset data
- Base your operation and maintenance strategy on facts rather than instinct
- Make meaningful comparisons across your wind farm portfolio
- Understand the health of your most critical assets
- Optimize your stock holding and remove ad hoc purchasing
- Understand the performance of your contractors
- Provide the owners the financial reports they ask for today
- Be ready for post warranty
- Sleep easy in the knowledge that your team and business are working to best HS&E practice
- Flex the way your teams and contractors work

Maximo for Offshore Wind Overview

The owners and operators of offshore wind farms and Offshore Transmission Operators (OFTOs) recognize the critical importance of an enterprise quality asset and work management system to support the operation and maintenance of offshore wind farms, whether under construction, operational, under warranty or out of warranty.

Maximo for Offshore Wind reflects BPD Zenith's 20 years of offshore asset management experience. With design input from industry experts such as *Generating Better* and BPD Client *London Array*, BPD Zenith is offering the Offshore Wind industry a compelling home-grown solution.

Built from IBM Maximo, the world's leading asset management system for critical operations, Maximo for Offshore Wind has been supported by *GROW:OffshoreWind*.

Functional Overview

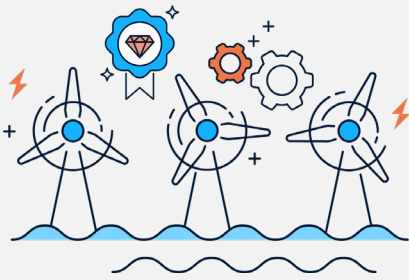
Maximo for Offshore Wind provides comprehensive support for asset and work management, supply chain, operations and Health, Safety and Environment on production and non-production assets, including OFTO assets.

Asset Management

- Support for all asset coding systems including RDS PP asset coding
- Full tracking of rotating assets in/out of 'functional locations'
- Support for the certification of safety critical assets
- Commissioning data
- Support for commissioning, snagging and non-conformities
- Management of change
- Integration-ready with condition monitoring systems - set thresholds on assets to trigger an inspection or other intervention

Health, Safety and Environment

- Support for Approved Work Procedure and Safety
- Documents for both HV and LV assets
- Risk assessments
- Permit to work Incident reporting/near hits/investigations/corrective actions
- Environmental consents
- Operational logs
- Regulatory compliance
- Production benefits/production losses
- Hazard management



For more information,
please get in touch

info@bpdzenith.com

EMEA +44 (0)808 1800 360

Canada +1 (587) 955 9522

US (403) 589 6990

Australia 1800 508 504

New Zealand 0800 508 504

Singapore +65 6817 1845

Macau (853) 28 711 663



Resources

- Support for key roles - Authorized Technician, Operational Controller, Planner, Senior Authorized Person etc.
- Role-based 'Start Centres'
- Certifications and competencies
- Normal rates and 'weather stand-down' rates
- Support for internal or third party resources working under contract

Stores and Spares

- Support for end to end supply chain management - Suppliers, contracts, warranties, procurement and spares management
- Bill of materials
- Tools management
- Support for multiple stores including on vessel store rooms
- Support for 'bundle bins' - spares needed for planned work
- Full analysis of spares used both under warranty and post warranty

Warranty

- Track defects against warranty
- Support for warranty claims
- Support for replacement campaigns arising from serial warranty claims
- Traceability of spares used under warranty
- End of warranty inspections
- Warranty extensions

Work History and Reporting

- Mean Time Between Failures (MTBF)
- Status of statutory inspections
- Backlog reports
- Open jobs causing production loss
- 'Forward log' reports
- Jobs 'Closed' but not 'Complete'
- Jobs 'On Hold Awaiting Spares'

Work Management

- Job 'bundling' to maximize production downtime
- Support for statutory inspections performed internally or externally
- Support for work on both production and non-production assets
- Workflow engine to support process driven work activities
- Record of Jack-up vessel used
- Support for industry-standard failure codes
- Fully integrated with Maximo Scheduler
- Support for mobile working - jobs and inspections dispatched to engineers and job done information entered in real time



www.bpdzenith.com