

MX+ DATASTUDIO

DATA MANAGEMENT MADE EASY



Mx+ DataStudio brings accuracy and trust to your Maximo® data uploads. With intuitive data validation rules and robust error checking, Mx+ DataStudio ensures only clean, compliant data is loaded into your database. By enforcing data quality at the point of entry, Mx+ DataStudio reduces costly errors and protects the integrity of your Maximo® environment.

- **Web-based data tool for Maximo®**
- **Query, Edit, and Upload large datasets**
- **Powerful real-time validation engine**
- **Secure role-based approval workflows**

MX+ Data Studio

Benefits of Mx+ DataStudio

- **Reduce data-load time and costs**
- **Improve your data quality**
- **Empower data owners without losing custodial approval**
- **Improved compliance – full audit trail of all data changes to Maximo®**
- **Rapid data load – streamline your data project lifecycle**
- **No data stored outside of Maximo® (no need for Excel files)**
- **Secure – natively uses the Maximo® Security Model and data restrictions**
- **Process driven – preview and validate data before committing to production**
- **Enterprise solution – scalable solution for flexible adoption model**

Includes tools to help you fix data errors - highlighting all erroneous cells, and providing *Excel*-like 'drag-to-fill' abilities to enable fast/multiple error correction.

Role-based access features are completely secure, so that your subcontractors or other third parties can pre-validate any of their data which is going in to your Maximo® system.

Validation of data for Maximo® is opened to a much wider staff base – no advanced Maximo skills are required, so you can have many more staff working on your data.

Ensures quality - no data can be actually loaded into Maximo® except by personnel assigned the Approver role – and data cannot be submitted for approval until it is fully validated.

Role-based Data Management for Maximo®

- Role-based access using Maximo® Security Groups
- Read Only, Editor and Approver roles enable process-driven data load using Maximo® Workflows, e.g. Subcontractor data input, with internal data approvers
- Support for bulk uploads, updates, and exports
- Create revision controlled data load templates in Maximo® – initial release includes templates for loading Assets, Locations, Job Plans, PMs, Routes, and Service Addresses
- Maximo® Mx+ Template application – fine-tuned control over application behaviour for each Security Group
- Maximo® Mx+ Folder Manager application – enables discrete Mx+ Data Studio teams to work in isolation

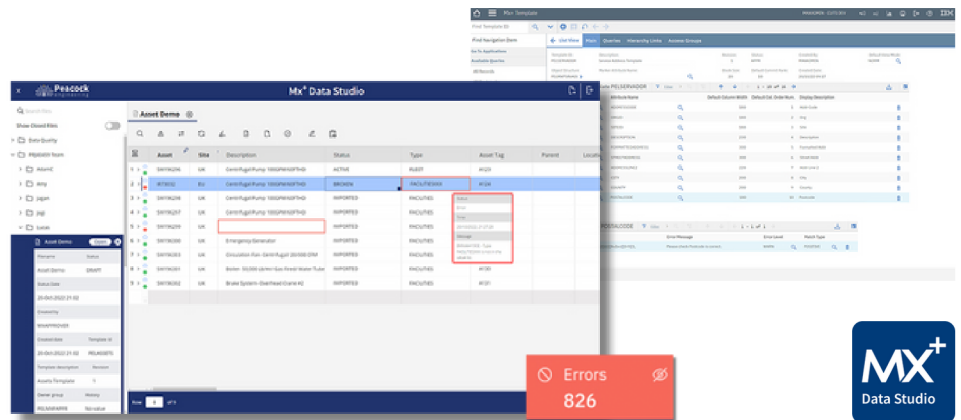
MX+ Data Studio

Powerful yet intuitive validation engine

- Multi-stage real-time validation engine
- Maximo® Schema Validation
- Maximo® Business Object Validation
- Custom validation rules using Regular expressions (e.g. postcodes & phone numbers)
- Real-time feedback of validation errors and warnings in each cell
- Error navigation mode for efficient issue resolution
- Live Maximo® data lookups
- Quick editing using keyboard navigation, autofill, and copy/paste
- Flexible filtering and sorting options available on any column

Advanced Data Management

- Support for multi-level datasets – e.g. assets with meters
- Create “file sets” – validate related datasets before committing to Maximo®
- Parent/child hierarchy support – automatic commit sequence calculation
- Import and export data to and from Excel – and between Mx+ Data Studio files



For more information, please get in touch



<https://bpdzenith.com>



Platinum Partner

EMEA +44 (0)808 1800 360
Canada +1 (587) 955 9522
US (403) 589 6990
Australia 1800 508 504
New Zealand 0800 508 504
Singapore +65 6817 1845
Macau (853) 28 711 663